

Sopot Welcome Package for Students and Parents





Free publication of Sopot City Hall

Edition 1. 2021

English translation by Izabela Jakubowska FABRYKA STYLU

Development and supervisory:
Centre for Continuing Education in Sopot
Centrum Kształcenia Ustawicznego w Sopocie
ul. Tadeusza Kościuszki 22-24, 81-704 Sopot

Cover photos: unsplash.com,
front - Vultar Bahr, back - Jess Bailey

Design: D53 Sp. z o.o. | d53.info

A warm welcome to Sopot!

Dear Students,

We are pleased that you have settled in our beautiful city and you are planning your future here. Sopot is an open and dynamic city which offers plenty of great opportunities. Thanks to people who work and live here, their potential and creativity, Sopot has the status of the city of culture, science and sport. We observe urban transformations, in particular the process of migration, which gives our city multicultural character. It is good that you are here. We want your live here to be as good as possible.

This guidebook is a collection of the most important information about science, education, both nationwide and from the perspective of Sopot, as well as the guide to the most important areas of life in our city.

We want to help you adapt to a new school, teachers, new colleagues and friends. We are here to answer your questions and concerns.



Jacek Karnowski
Mayor of the City of Sopot



Magdalena Czarzyńska-Jachim
Deputy Mayor of the City of Sopot

Sopot welcomes!

Useful contacts

Mariya Amiroslanova i Olesia Kulakova
Assistant Secretaries for Intercultural Integration
in Sopot schools
Centre for Continuing Education in Sopot
ul. Tadeusza Kościuszki 22-24
81-704 Sopot
tel.: 58 551 00 11 (int. 47)
m.amiroslanova@ckusopot.pl
o.kulakova@ckusopot.pl

Working hours:
Monday - Friday 08:00 - 16:00

Maciej Rusek
Head of the Office for Local Government Relations and
Repatriation of the City of Sopot
tel.: 58 52 13 612
maciej.rusek@um.sopot.pl

Support in dealing with official matters
in Russian

Helena Geisler
Language Assistant in City Hall in Sopot, Sub-inspector
of the Administration and Economic Department
Sopot City Hall
ul. Tadeusza Kościuszki 25/27
81-704 Sopot
tel.: 58 521 37 23
helena.geisler@um.sopot.pl

Sopot Integration and Support Centre
for Foreigners

ul. Młyńska 11, 81-715 Sopot

tel.: 504 943 910 (office)

sciwc@ab.org.pl

facebook.com/sciwc/

Visiting hours:

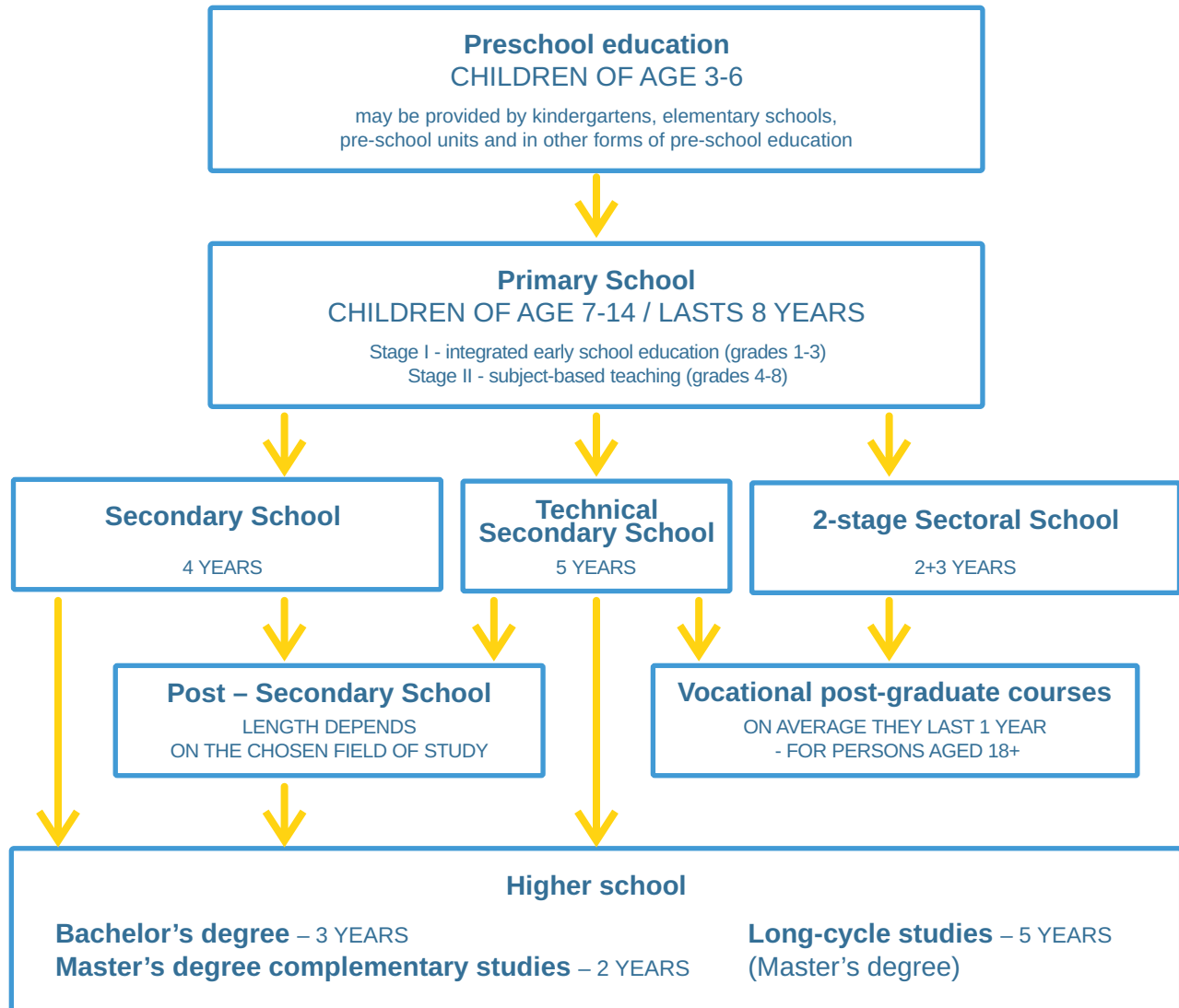
Monday, Wednesday, Thursday 16:30 - 20:30

Centre for Foreigners offers free of charge:

- Polish language courses (various levels of proficiency)
- providing legal and residency status information
- career counselling in the form of individual and group consultations
- assistance in solving problems
- legal assistance
- psychological support
- integration activities (organization of integration events)
- the services are provided in: Russian, English and Polish.












I. Education

Diagram of the education system in Poland



In Poland education is compulsory until the age of 18

School Year Calendar

	September / Wrzesień	Start of school year
	October / Październik	14.10 Teachers' Day (National Education Day)
	November / Listopad	01.11 All Saints' Day 11.11 National Independence Day
	December / Grudzień	23-31.12 Christmas and winter break
	January / February Styczeń / Luty	2 weeks of winter holidays – according to the calendar of the Ministry of Education and Science
	March / April Marzec / Kwiecień	Easter break
	May / Maj	01.05 International Workers' Day 03.05 3rd May Constitution Day
	June / Czerwiec	End of school year
	July / August Lipiec / Sierpień	Summer holidays
	Exam dates
	Extra days off at school

Important school contacts

School

.....
name *address* *website*

School Office

.....
room no. *telephone* *email*

Principal

.....
name *room no.* *telephone* *email*

Form teacher

.....
name *room no.* *telephone* *email*

School counselor

.....
name *room no.* *telephone* *email*

School grading system

Years 1-3

Descriptive assessment, i.e. you and your parents receive information about your progress in learning and behavior, both on a regular basis and at the end of each term.

Years 4-8

- You receive marks on a scale of 1 to 6.
- Teachers will assess your progress on an regular basis.
- Both at the end of each term and a school year you will be provided with final grades in each subject and your behavior.

6 point subject grading scale

6

excellent
celujący
(++++++)

5

very good
bardzo dobry
(+++++)

4

good
dobry
(++++)

3

satisfactory
dostateczny
(+++)

2

sufficient
dopuszczający
(++)

1

insufficient / fail
nieodstateczny
(-)

Your behaviour will be assessed as

excellent
wzorowe

very good
bardzo dobre

good
dobre

acceptable
poprawne

unacceptable
nieodpowiednie

inadmissible
naganne

School ID-card

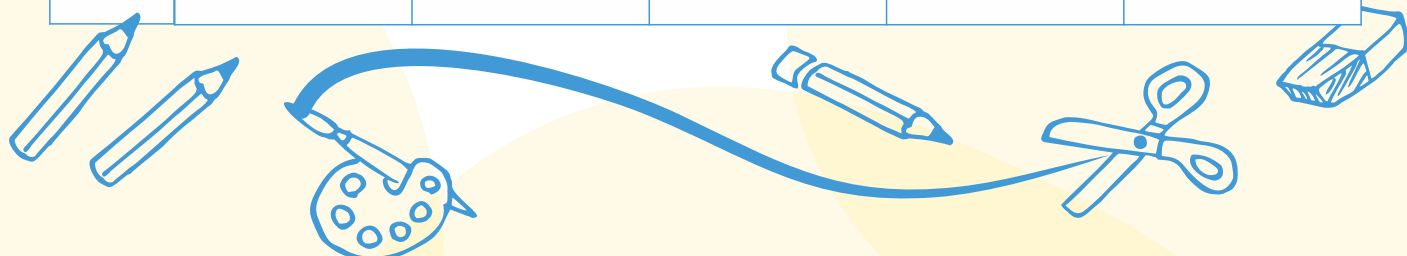
School ID card – a document entitling a student to statutory discounts on public rail and bus transport.

The document entitles its holder to buy a discounted ticket to the cinema, theatre, museum, swimming pool or to many other places. Every student can obtain a school ID card free of charge. It is intended to prove that the particular person is a student of particular school. The document must be renewed every year as it is valid for only one school year – until 30 September of the following year, which is confirmed annually by the school in the appropriate place on the card.



Lesson plan

Lesson	Monday	Tuesday	Wednesday	Thursday	Friday



Librus Synergia electronic journal (e-journal)

The electronic journal is a system used to monitor student's learning, attendance and grades. There is information about set homework, substitution lessons, school events and it also enables parent-teacher communication.

How to use Librus?

1. A computer with internet access is required.
2. Synergy logbook password and login for a child and his/her parents is provided by each particular school.
3. An account needs to be created on portal.librus.pl/rodzina
4. Click the "Start" option. When logging in for the first time, it is necessary to create an account by entering your e-mail address, which will be the login to your Librus account, and to enter your own login password and then click "Create an account".
5. A message with an activation link will be sent to you on an e-mail address that you had provided before; after clicking the link your new Librus account will be created.
6. Then, you need to link your Librus account to the Synergia account that you received at school. This option will appear on the Librus webpage after setting up the account - just select the 'Link accounts' button. You will then need to enter the Synergia system username and password you were provided earlier at school. After that, log in and accept RODO requirements.

portal.librus.pl/rodzina

3

4

5

6

Items useful in kindergarten and at school

Kindergarten

Remember to equip your child with kindergarten shoes, extra clothes, toothbrush and toothpaste, toothbrush holder cup.

Basic stationery is always available at the kindergarten. Depending on the class plan, the kindergarten teacher informs parents about additional items that the child must bring to certain classes.

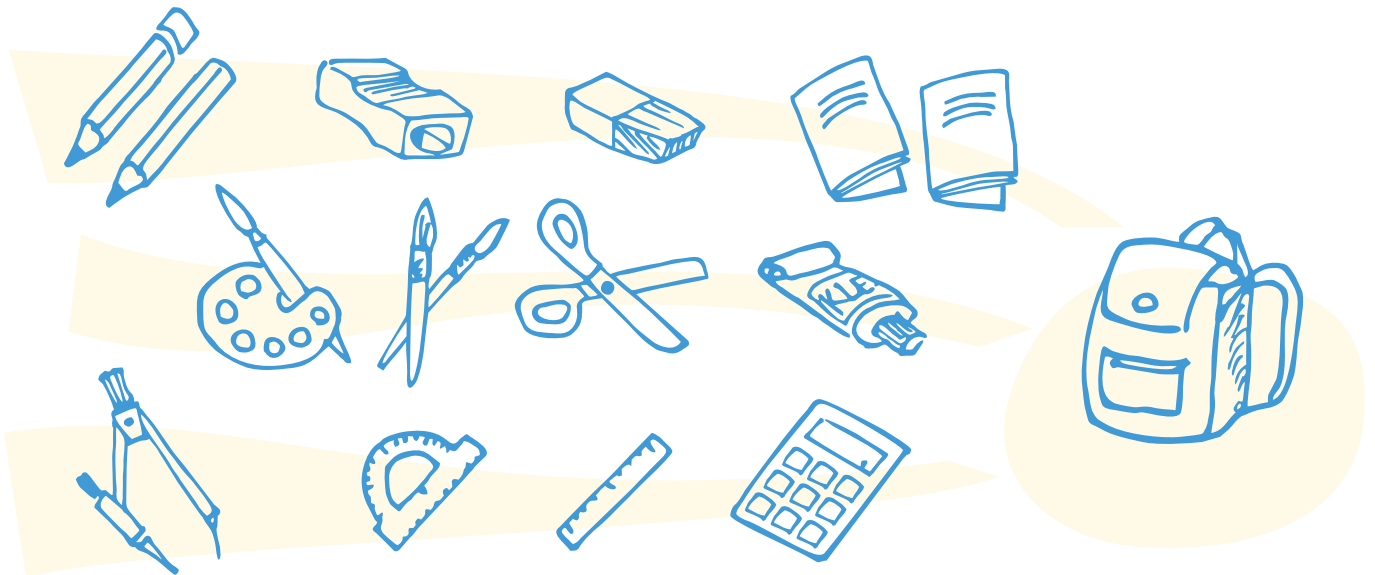


Years 1-3 of primary schools

Paints, brushes, plasticine, glue, erasers, scissors and correctors are indispensable accessories. It is worth remembering to bring not only notebooks but also a paper drawing pad and a paper technical pad, as these two items are most often used by pupils during art classes.

Other essential stationery products are also pencils, a notebook, a ruler, a pencil sharpener, an eraser, a backpack, paints, paintbrushes, an angle meter, a school compass, a calculator and glue.

Textbooks in primary schools are provided for free by school.



School form templates

Justification for student absence

Please excuse the absence from school
of my child,..... *[name, surname, class]*.....
on (exact date) from to
due to

..... *[date + legible signature of Parent / Guardian]*

Usprawiedliwienie

Proszę o usprawiedliwienie nieobecności
w szkole mojego dziecka*[imię, nazwisko, klasa]*
w dniu w godzinach
Nieobecność spowodowana jest

..... *[data + czytelny podpis rodziców/opiekunów dziecka]*

Early dismissal note

I am respectfully writing to inform you that
my child*[iname, surname, class]*.....
will be absent from (classes):
onfromto due to

..... *[date + legible signature of Parent / Guardian]*

Zwolnienie z lekcji

Zwracam się z prośbą o zwolnienie mojego dziecka
.....*[imię, nazwisko, klasa]*.....
z lekcjiw dniuw godzinachz powodu

..... *[data + czytelny podpis rodziców/opiekunów dziecka]*

Parent - Teacher Conference notice

The Conference will be held on
(exact date)..... from
to..... in classroom no.
We look forward to meeting with you.

Zawiadomienie o zebraniu rodziców

Dnia r. o godz.....w odbędzie
się zebranie z rodzicami.

Serdecznie zapraszamy

Other school forms will be provided by the school council or teachers.

Recruitment procedures for schools in Sopot

Kindergartens

Documents required in the process of enrolling a child in public kindergarten

1. A completed application for admission to kindergarten ('Wniosek o przyjęcie dziecka do przedszkola'), form available on the kindergarten's webpage
2. Declaration about the child's stay in the kindergarten.
3. All documents shall be completed and signed by the parent/legal guardian
4. All documents should be submitted to the chosen kindergarten in person or electronically.
5. Child stay fees apply to costs for educational and childcare services and costs of meals.

Primary schools

In the process of enrolling a child in a primary school, parents must complete an application form which can be found on the schools' websites. The application can be submitted to the chosen school either in person or electronically (via e-mail).

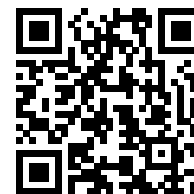
Secondary schools

Secondary school recruitment is managed through the website:
www.nabor-pomorze.edu.com.pl/kandydat

Information on Secondary Schools in Sopot can be found on webpage:
www.szkolyponadpodstawowe.sopot.pl



nabor-pomorze...



szkolyponadpo...

List of public kindergartens and schools in Sopot

Kindergartens

Kindergarten No. 1

ul. Armii Krajowej 58, 81-843 Sopot

Division

ul. Kasprowicza 1, 81-852 Sopot

tel.: 58 551 14 43

przedszkole1sopot@wp.pl

www.p1sopot.szkolnastrona.pl

Kindergarten No. 2

ul. 23 Marca 88/90, 81-820 Sopot

tel.: 58 551 67 31

przedszkole2@sopot.pl

www.przedszkole2sopot.szkolnastrona.pl

Kindergarten No. 4

ul. Obodrzyców 20, 81-812 Sopot

tel.: 58 551 40 28

przedszkole4@sopot.pl

www.przedszkole4sopot.edupage.org

Kindergarten No. 5

ul. Jana Jerzego Haffnera 72, 81-715 Sopot

tel.: 58 551 16 12

przedszkole5@sopot.pl

www.przedszkolenr5sopot.pl

Kindergarten No. 8

ul. Jana z Kolna 3, 81-746 Sopot

tel.: 58 551 14 70

przedszkole8@sopot.pl

www.przedszkole8.com

Kindergarten No. 10

ul. Tadeusza Kościuszki 31, 81-704 Sopot

tel.: 58 551 17 44

przedszkole10@sopot.pl

www.przedszkole10sopot.edupage.org

Children with a decision about the need for special education are accepted in the following kindergartens

Kindergarten No. 12 with Integration Classes (Przedszkole z Oddziałami Integracyjnymi nr 12)

ul. Oskara Kolberga 8, 81-881 Sopot

tel.: 58 551 90 97

przedszkole12@sopot.pl

www.przedszkole12.sopot.pl

Kindergarten No. 14 for children with special needs

(Przedszkole specjalne nr 14)

ul. Kazimierza Wielkiego 14
81-704 Sopot

tel.: 58 551 18 15

zss5sekretariat@sopot.pl

www.zss5sopot.pl

Public primary schools in Sopot and their district boundaries

Primary School No. 1 with Integration Classes – Szkoła Podstawowa z Oddziałami Integracyjnymi Nr 1 im. Armii Krajowej w Sopocie

ul. Armii Krajowej 50/54, 81-843 Sopot

tel.: 58 551 38 24

sekretariat@sp1sopot.eu

www.sp1sopot.eu

Street names: Antoniego Abrahama, Aleja Niepodległości: even numbers from 606 to 858, Armii Krajowej, Boczna, Władysława Broniewskiego, Józefa Konrada, Jana Długosza, Gen. Władysława Andersa, Artura Grottgera, Zbigniewa Herberta, Jana Kasprówicza, Jana Kochanowskiego, Marii Konopnickiej, Mikołaja Kopernika, Ignacego Krasickiego, Krótka, Leśna, Leśna Polana, 1 Maja, 23 Marca: no. 1 to 9 and from 2 to 14, Adama Mickiewicza, Stanisława Moniuszki, Elizy Orzeszkowej, Ignacego Paderewskiego, Bolesława Prusa, Mikołaja Reja, Władysława Reymonta, Gen. Władysława Sikorskiego, Świemirowska, Juliusza Słowackiego, Smolna, Andrzeja Struga, Juliana Tuwima, Gen. Józefa Wybickiego, Stanisława Wyspiańskiego, Dr Ludwika Zamenhofs, Stefana Żeromskiego

Primary School No.7 with Sport Sections – Szkoła Podstawowa z Oddziałami Sportowymi Nr 7 im. Tadeusza Kościuszki w Sopocie

ul. Jana Jerzego Haffnera 55, 81-715 Sopot

tel.: 58 551 01 11

sekretariat@sp7.sopot.pl

www.SP7.sopot.pl

Street names: Aleja Niepodległości: odd numbers from 771 till the end of the street, Bałtycka, Gen. Józefa Bema, Bohaterów Monte Cassino, Wosia Budzysza, Floriana

Ceynowy, Fryderyka Chopina odd numbers, Józefa Czyżewskiego, Alfonsa Chmielewskiego, Dworcowa, Gen. Stanisława Fiszera, Jakuba Goyki, Grunwaldzka: no. 1 to 27, Jana Jerzego Haffnera, Helska, Królowej Jadwigi, Władysława Jagiełły, Tadeusza Kościuszki: no. 1 to 12, Dr Franciszka Kubacza, Morska, Dr Aleksandra Majkowskiego, Młyńska, Mariana Mokwy, Ogrodowa, Podjazd, Piastów, Tomasza Pokorniewskiego, Powstańców Warszawy, Gen. Kazimierza Pułaskiego, Sępia, Jana Sobieskiego no. 1 to 23, Tenisowa, Obrońców Westerplatte, Jana Winieckiego, Zamkowa Góra

Primary School No. 8 with Integration Classes – Szkoła Podstawowa z Oddziałami Integracyjnymi Nr 8 im. Jana Matejki w Sopocie

ul. Józefa Golca 3, 81-743 Sopot

tel.: 58 551 35 37

zielonaosemka@wp.pl

www.sp8sopot.edupage.org

Street names: Aleja Niepodległości: odd numbers from 625 to 769, Architektów, Bitwy pod Płowcami, Fryderyka Chopina even numbers, Bolesława Chrobrego, Gen. Jarosława Dąbrowskiego, Dębowa, Michała Drzymały, Bartosza Głowackiego, Grunwaldzka: from no. 31 up, Hestii, Jana z Kolna, Berka Joselewicza, Karlikowska, Kazimierza Wielkiego, Jana Kilińskiego, Kolejowa, Księża Augustyna Koreckiego, Książąt Pomorskich, Tadeusza Kościuszki: from no. 13 up, Króla Jana Kazimierza, Krzysztofa Klenczona, Gen. Mariana Langiewicza, Lipowa, Władysława Łokietka, 3 Maja, Marynarzy, Mieszka I, Gen. Ludwika Mierosławskiego, Na Wydmach, Stefana Okrzei, Parkowa, Plac Rybaków, Emilii Plater, Platynowa, Pogodna, Polna, Księcia Józefa Poniatowskiego, Poznańska, Raclawicka, Rzemieślnicza, Skarpowa, Marii Skłodowskiej-Curie, Jana Sobieskiego: from no. 26

** district boundaries do not apply to classes formed as sports section*

Primary School No. 9 with Integration Classes – Szkoła Podstawowa z Oddziałami Integracyjnymi Nr 9 im. Gen. Władysława Sikorskiego w Sopocie
ul. Oskara Kolberga 15, 81-881 Sopot

tel.: 58 551 90 96
sp9@sp9.edu.pl
www.sp9.edu.pl

Street names: Aleja Niepodległości: even numbers from 860 till the end of the street, Daniela Chodowieckiego, Władysława Cieszyńskiego, Junaków, Kaszubska, Oskara Kolberga, Józefa Kraszewskiego, Kujawska, Księżycowa, Łowicka, Łużycka, Małopolska, Mazowiecka, Jacka Malczewskiego, 23 Marca: no. 11, 13 and from 15 up, Obodrzyców, Okrężna, Piaskowa, Podgórna, Henryka Sienkiewicza, Słoneczna, Tatrzańska, Wejherowska, Zacisze.

Complex of Special Schools No. 5 – Zespół Szkół Specjalnych Nr 5
ul. Kazimierza Wielkiego 14, 81-704 Sopot
(Children with a decision about the need for special education are accepted)

tel.: 58 551 18 15
zss5sekretariat@sopot.pl
www.zss5sopot.pl

Public secondary schools in Sopot

Secondary School No. 1 with Athletic Championship Sections – I Liceum Ogólnokształcące z Oddziałami Mistrzostwa Sportowego im. M. Skłodowskiej - Curie
ul. Książąt Pomorskich 16/18, 81-749 Sopot

tel.: 58 551 14 93
szkola@1losopot.pl
www.1losopot.pl

Secondary School No. 2 – II Liceum Ogólnokształcące im. Bolesława Chrobrego
ul. Aleja Niepodległości 751, 81-838 Sopot

tel.: 58 551 11 84
lo2@sopot.pl
www.lo2.sopot.pl

Secondary School No. 3 – III Liceum Ogólnokształcące im. Agnieszki Osieckiej
ul. Oskara Kolberga 15, 81-881 Sopot

tel.: 58 550 69 81
sekretariat@3lo.sopot.pl
www.3lo.sopot.pl

Complex of Technical Schools – Zespół Szkół Technicznych

ul. Wejherowska 1
81-814 Sopot

tel.: 58 551 11 92
sekretariat@zstsopot.pl
www.zshsopot.edupage.org

Centre for Continuing Education – Centrum Kształcenia Ustawicznego im. Bohaterów Wybrzeża

ul. Tadeusza Kościuszki 22-24, 81-704 Sopot
tel.: 58 551 00 11
cku@ckusopot.pl
www.ckusopot.pl

The Youth Council of the City of Sopot

The Youth Council of the City of Sopot has been officially operating since November 2020. It supports the youth of Sopot. Currently, it consists of the following committees: promotion, mental health, education, sport and recreation.

The Youth City Council organizes workshops and debates, informs young residents of Sopot about interesting initiatives, volunteering and other events. It cooperates with schools. The councillors are pupils in 7th and 8th years of primary schools and students of secondary schools in Sopot.

Contact

The President of the Youth Council of the City of Sopot
Sopot City Hall, ul. Tadeusza Kościuszki 25/27, 81-704 Sopot
office rooms 60-63, 1st floor

tel.: 58 52 13 672 / 58 52 13 673

mrms@sopot.pl

Psychological and Pedagogical Counselling Centre in Sopot

The aim of Psychological-Pedagogical Counselling Centre is to provide psychological and pedagogical assistance, speech therapy and support in choosing the direction of education and profession for children and young people. In addition, the centre also provides support for parents and teachers in the area of psychological-educational upbringing and education of children and young people.

Contact

ul. Władysława IV 23, 81-742 Sopot

tel.: 58 551 51 33

ppp@poradniasopot.pl

II. Healthcare

In case of sickness, you can receive free medical care from public National Health Fund called *Narodowy Fundusz Zdrowia*

You choose your GP doctor by submitting a written declaration to the clinic of your choice. This can be done through an Online Patient Portal. Details on: pacjent.gov.pl

It is worth to provide your child's doctor with the Personal Child Health Record translated into Polish, especially with the vaccine records, which the child received previously! Arrange an appointment with the GP to hand him/her in your child's personal health record!



Social welfare

MOPS – City Social Welfare Centre – provides various forms of support that depend on a person's status and his/her type of residence permit in Poland. Some types of assistance depend on the person's income and some other criteria.

Examples of forms of support:

- shelter, meal and necessary clothing
- purpose-specific allowance to fulfil essential living needs
- cash benefits for maintenance or covering expenses related to learning Polish language
- health insurance payment help
- social work, specialist advice (e.g. psychologist, lawyer)
- assistance provided on the basis of the Individual Integration Programme; financial resources from the government

administration and the Pomeranian Voivodeship Office

- family and guardianship benefits (for families with children and carers in disability)
- social benefits such as: "Family 500+" offered for each child up to the age of 18 as a state support and "Good Start 300+" as a one-off support for all students starting the school year - regardless of parents' income

To find out what support you are entitled to, contact a social worker.

Social Work Department

ul. Kolejowa 14, 80-001 Sopot

tel.: 58 551 17 10, Mon - Fri 7:30-15:30

www.mopssopot.pl

List of Sopot Health Centres

Specialized Medical Centre – Medycyna Specjalistyczna Zakład Opieki Zdrowotnej

ul. Grunwaldzka 36A, 81-754 Sopot

tel.: 58 551 49 44, 58 551 74 55,
58 555 01 39

rejestracja@medspec.pl

KARDIOTEL

ul. Jana z Kolna 16, 81-741 Sopot

tel.: 58 555 94 15/ 16

biuro@kardiotel.pl

NZOZ* MARMED

ul. Mariana Mokwy 7/1, 81-718 Sopot

tel.: 58 551 01 36

marmedsopot@gmail.com

Centrum Medyczne SOPMED

ul. Bolesława Chrobrego 6/8, 81-756 Sopot

tel.: 58 555 26 00, 58 506 54 55

biuro@sopmed.pl

"BRODWINO" Maria Łukaszewicz

ul. Oskara Kolberga 7, 81-881 Sopot

tel.: 58 551 96 67

NZOZ* JEDYNKA – Agata Zaborowska- Bajko, Joanna Manowska

ul. Oskara Kolberga 7, 81-881 Sopot

tel.: 58 551 55 36

nzozejdynka@wp.pl

A.B.C. FAMILY MED

ul. Małopolska 42A, 81-813 Sopot

tel.: 58 550 55 66, 58 550 66 55

abc@family.med.pl

Przychodnia Lekarska Nowy Chełm

ul. 23 Marca 79A, 81-820 Sopot

tel.: 58 770 44 80

sopot@przychodniachelm.pl

NZOZ* Medicus

al. Niepodległości 747/1, 81-840 Sopot

tel.: 58 551 26 49

nzoz.medicus.sopot@o2.pl

Caritas Archidiecezji Gdańskiej

Primary Health Care nurse office

al. Niepodległości 778, 81-805 Sopot

hospicjumgd@caritas.pl

Night and Day Care (Nocna i Świąteczna Opieka Chorych - NOCH)

ul. Bolesława Chrobrego 10, 81-783 Sopot

tel.: 58 555 81 13, 58 555 81 14

Open at night, weekends as well as on holiday days; the care is provided by City Ambulance Service.

Work hours:

Monday to Friday from 6:00 pm to 7:00 am and
24/7 on Saturdays, Sundays and public holidays

III. Sports and culture

Sopot cultural institutions

Goyki 3 Art Inkubator

ul. Sobieskiego 26/4, 81-781 Sopot

tel.: 58 691 56 82

biuro@goyki3.pl

www.goyki3.pl

Municipal Sports and Recreation Centre Miejski Ośrodek Sportu i Rekreacji

ul. Bitwy Pod Płowcami 67c, 81-731 Sopot

tel.: 58 550 12 15

sport.mosir@use.pl

www.mosir.sopot.pl

Youth Cultural Centre

Młodzieżowy Dom Kultury

al. Niepodległości 763, 81-838 Sopot

tel.: 58 551 41 31

mdk@sopot.pl

www.mdk.sopot.pl

Muzeum Sopotu

ul. Księcia Józefa Poniatowskiego 8,
81-724 Sopot

tel.: 58 551 22 66

sekretariat@muzeumsopotu.pl

www.muzeumsopotu.pl

National Gallery of Art

Państwowa Galeria Sztuki

ul. Plac Zdrojowy 2, 81-720 Sopot

tel.: 58 58 551 06 21

sekretariat@pgs.pl

www.pgs.pl

MOSiR Indoor Swimming Pool

Pływalnia kryta MOSiR

ul. J.J. Haffnera 57, 81-715 Sopot

tel.: 58 551 68 42 / 697 025 493

plywalnia.mosir@use.pl

www.mosir.sopot.pl

Open Air Archaeological Museum Skansen Archeologiczny - Grodzisko w Sopocie

ul. J. J. Haffnera 63, 81-715 Sopot

tel.: 58 340 66 00

grodzisko@archeologia.pl

www.archeologia.pl

1st grade Music School in Sopot Sopocka Szkoła Muzyczna I stopnia im. Stanisława Moniuszki

ul. Obr. Westerplatte 18/20, 81-706 Sopot

tel.: 58 551 26 28

ssm@sopockaszkolamuzyczna.pl

www.sopockaszkolamuzyczna.pl

Sopot Art Centre

Sopockie Ognisko Plastyczne

ul. Księżycowa 3b , 81-821 Sopot

tel.: 58 551 41 14

sop@sopot.pl

www.ogniskoplastyczne.pl

Libraries

Broadway

ul. Oskara Kolberga 9, 81-881 Sopot

tel.: 58 551 98 40

filia7@mbp.sopot.pl

Branch No. 2

ul. Kraszewskiego 26, 81-815 Sopot

tel.: 58 551 88 77

filia2@mbp.sopot.pl

Branch No. 6

ul. 23 marca 77C, 81-820 Sopot

tel.: 58 551 48 81

filia6@mbp.sopot.pl

Branch No. 8

ul. Mazowiecka 26, 81-862 Sopot

tel.: 58 550 66 74

filia8@mbp.sopot.pl

Blanket & Book / Koc i Książka

ul. Kazimierza Wielkiego 14, 81-773 Sopot

tel.: 58 551 51 12

filia5@mbp.sopot.pl

Miniteka

ul. Obrońców Westerplatte 16, 81-706 Sopot

tel.: 58 551 12 87 w. 23

wypożyczalnia@mbp.sopot.pl

Sopoteka – Multimedia Gallery

Sopoteka - galeria kultury multimedialnej

ul. Tadeusza Kościuszki 14, 81-704 Sopot

tel.: 601 747 838

sopoteka@mbp.sopot.pl

For readers who visit Sopoteka there are books in four foreign languages: English, German, Belarusian and Russian. English-language literature is available on the bookshelf located in the 'quiet work' area, which, looking from the lending desk, is the fifth and the last bookcase.

Books in German, Belarusian and Russian are under the shelves with the press, and can be found by entering the Sopoteka from the part with escalator and heading from there to the left into the centre of the building.



Municipal Library in Sopot
Miejska Biblioteka Publiczna
mbp.sopot.pl

biblioteka //
sopocka

Sopot City Resident Card

Sopot City Resident Card is a card which every resident of the resort may obtain at the City Hall.

The card entitles its holder to discounts offered by nearly 100 places, mainly restaurants, hotels, cultural and sports facilities and given on numerous other services, including medical services in selected Sopot institutions



The Sopot City Resident Card can be obtained by:

- A Person registered for permanent or temporary residence for more than one year
While collecting the card, the fact will be confirmed in the population register by an employee of the City Hall.
- A person who pays income tax in Sopot
While collecting the card, please show your PIT or CIT form for the previous fiscal year
- An underage person whose parent pays taxes in Sopot
Please show your school ID or birth certificate while collecting the card.

Owning a property in Sopot and paying property tax on it does not entitle you to receive the Sopot City Resident Card.

Emergency numbers

112

RESCUE!

997

POLICE

998

FIRE
BRIGADE

999

AMBULANCE

991

EMERGENCY
ELECTRICAL
SERVICES

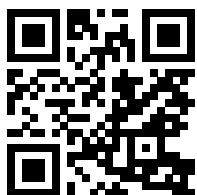
992

EMERGENCY
GAS
SERVICES

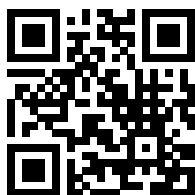
994

EMERGENCY
WATER AND
SEWER SERVICES

Useful links



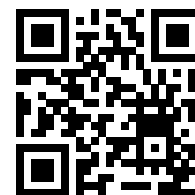
www.sopot.pl



bjp.sopot.pl



kuratorium.gda.pl



zpe.gov.pl

